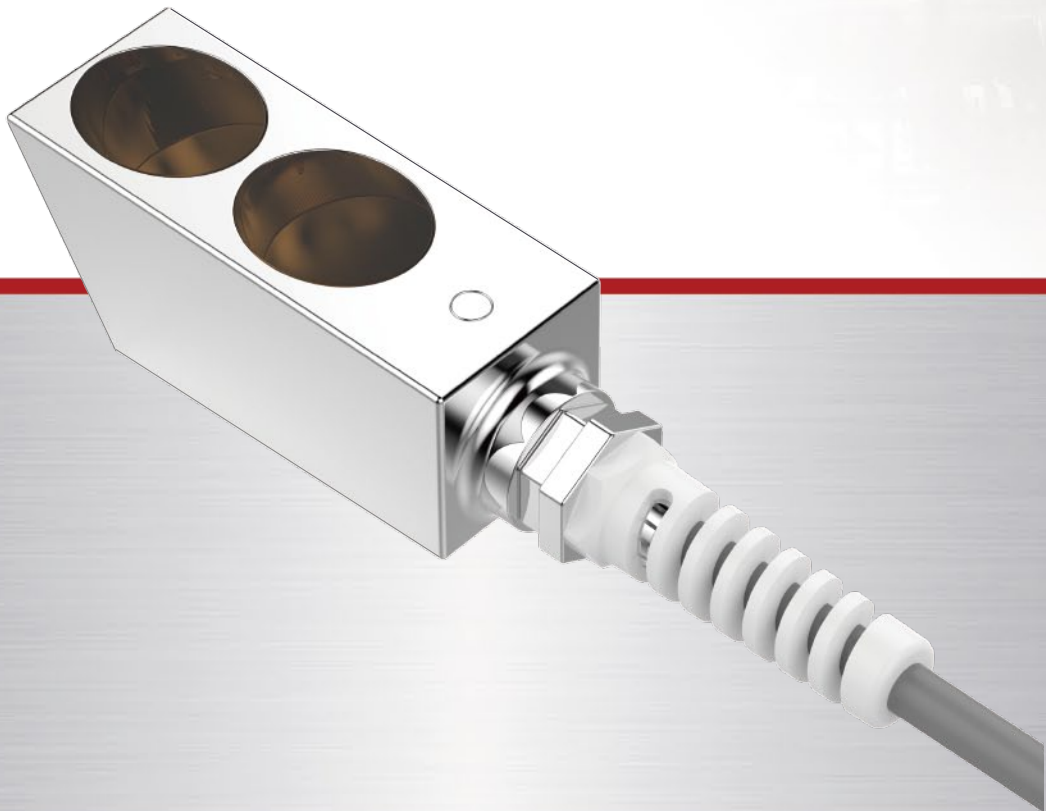


# Doppler Flow Sensor

- Non-contact detection
- Stable and reliable performance
- Excellent consistency



# Doppler Flow Sensor

Doppler flow sensor uses Doppler effect for non-contact measurement of fluid flow velocity in pipes or channels. This sensor is mainly used in clamp-on ultrasonic Doppler flow meters. The measurement is not affected by the viscosity and electrical conductivity of fluids. Therefore this product is applicable to a variety of liquids.

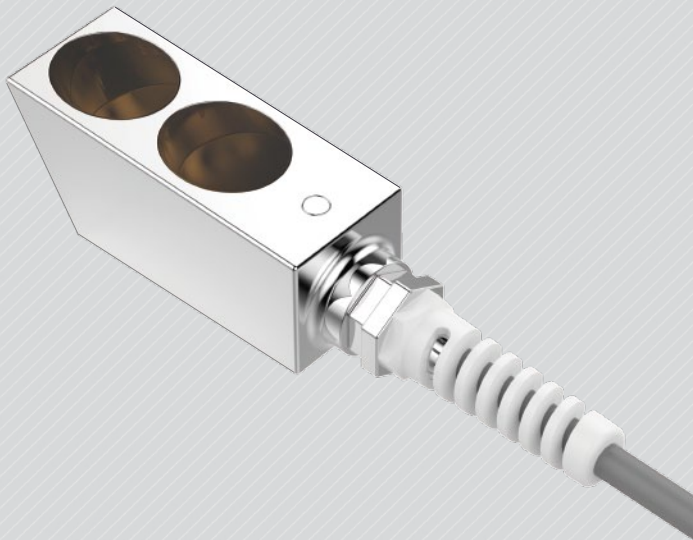
## Features

- Non-contact detection
- Stable and reliable performance
- Excellent consistency

## Applications

Industrial flow measurement, hydraulic engineering, agricultural irrigation, etc.

AUDIOWELL | SENSOR TECHNOLOGY



Model	US0055
Resonant frequency	600±20 KHz
Resonant impedance	≤55 Ω
Static capacitance	5900±20% nF